

NOTES:
 2X4 WALLS
 9' CEILING
 LAP SIDING-HARDI PLANK
 VINYL SOFFIT
 4/12 PITCH ROOF
 DIMENSIONAL SHINGLES
 R-15 INSULATION
 PARKING PAD TO BE BASE LAYER #2's
 OR #3's WITH A TOP LAYER OF
 COMPATIBLE 53's
 STONE SHOULD BE LEVEL WITH
 SIDEWALK

LEVEL 1
 LIVING SQ. FT. 142
 PORCH SQ. FT. 194

Revision Table		
Number	Date	Description

INHP
 18 S. EUCLID AVE.
 INDIANAPOLIS, IN 46201

WHITE OAK CONSTRUCTION
 Drawn By: R. McCowan
 10467 US Hwy 136 Indianapolis IN, 46077
 (317) 243-7140

DATE:

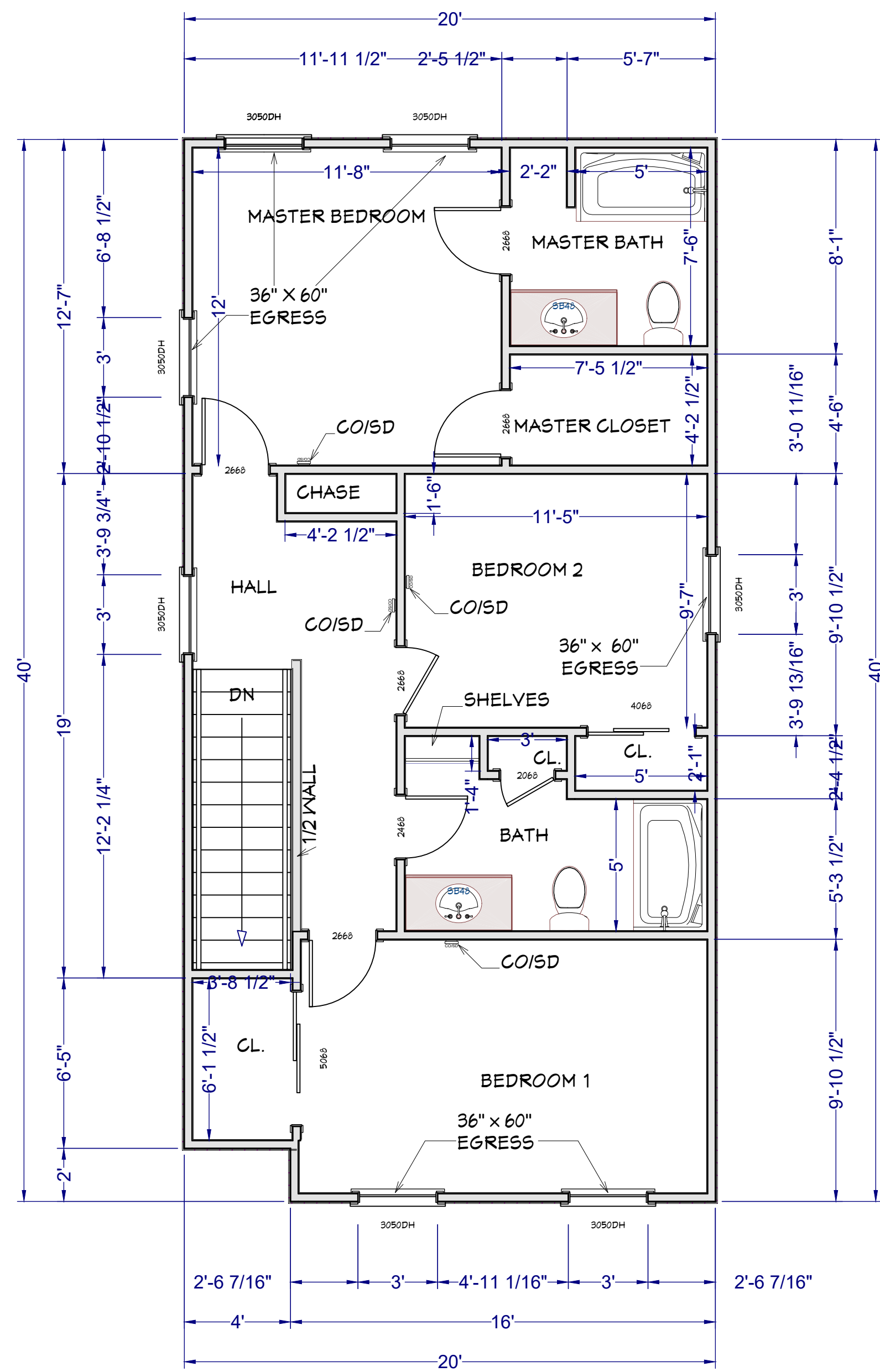
07/19/2022

SCALE:

1/4"=1'-0"

SHEET:

A-2



NOTES:
 2X4 WALLS
 9' CEILING
 LAP SIDING REAR & SIDES-HARDI
 BOARD & BATTEN FRONT-HARDI
 SHAKE SIDING IN FRONT GABLES-HARDI
 VINYL SOFFIT
 9/12 PITCH ROOF
 DIMENSIONAL SHINGLES
 R-15 INSULATION

LEVEL 2
 LIVING SQ. FT. 792

Revision Table		
Number	Date	Description

INHP
 18 S. EUCLID AVE.
 INDIANAPOLIS, IN 46201

WHITE OAK CONSTRUCTION
 Drawn By: R. McCowen
 10467 US Hwy 136 Indianapolis IN, 46077
 (317) 243-7140

DATE:

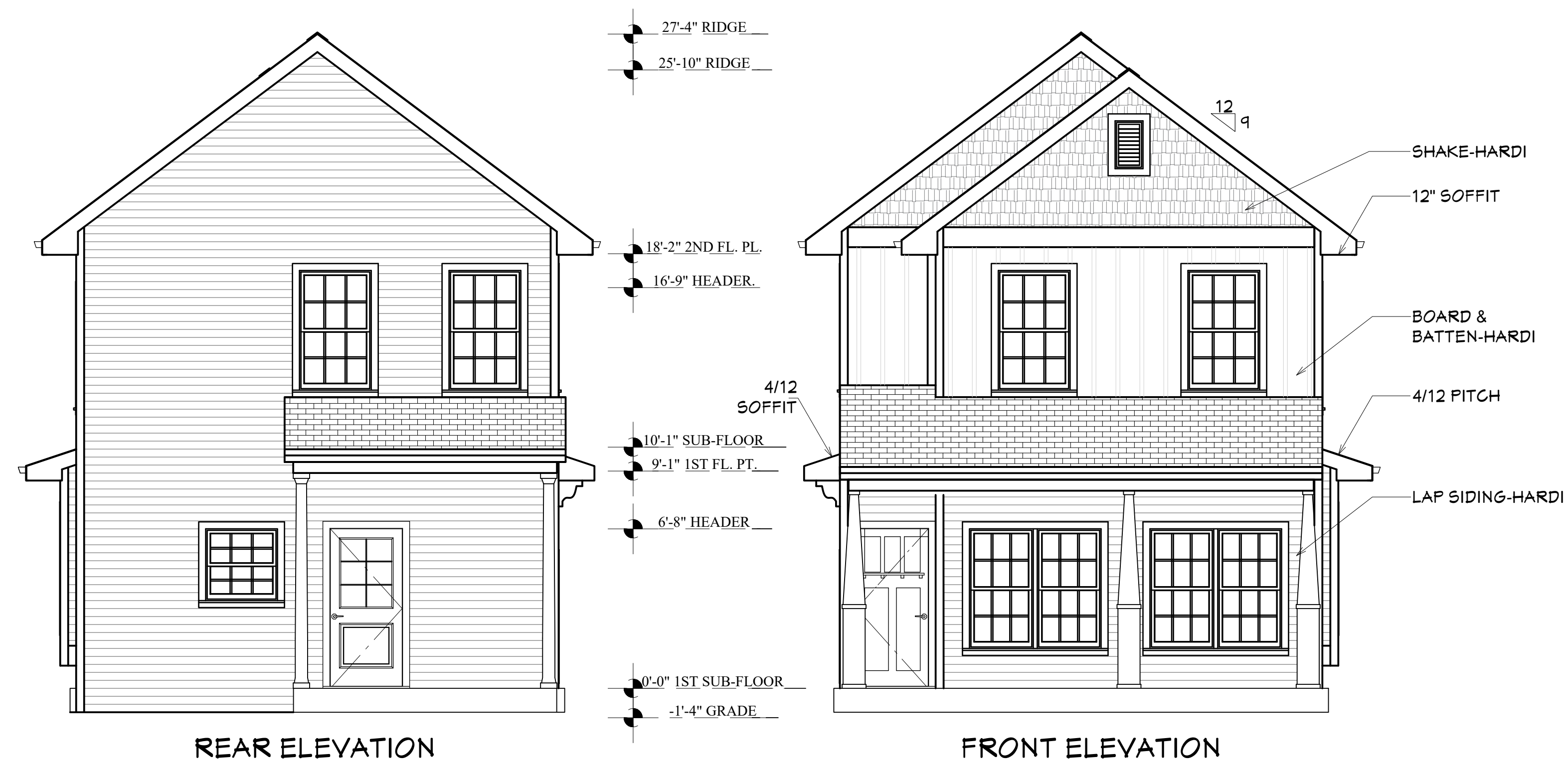
07/19/2022

SCALE:

1/4"=1'-0"

SHEET:

A-3



Revision Table	
Number	Date

INHP
18 S. EUCLID AVE.
INDIANAPOLIS, IN 46201

WHITE OAK CONSTRUCTION
Drawn By: R. McCowen
10467 US Hwy 136 Indianapolis IN, 46077
(317) 243-7140

DATE:

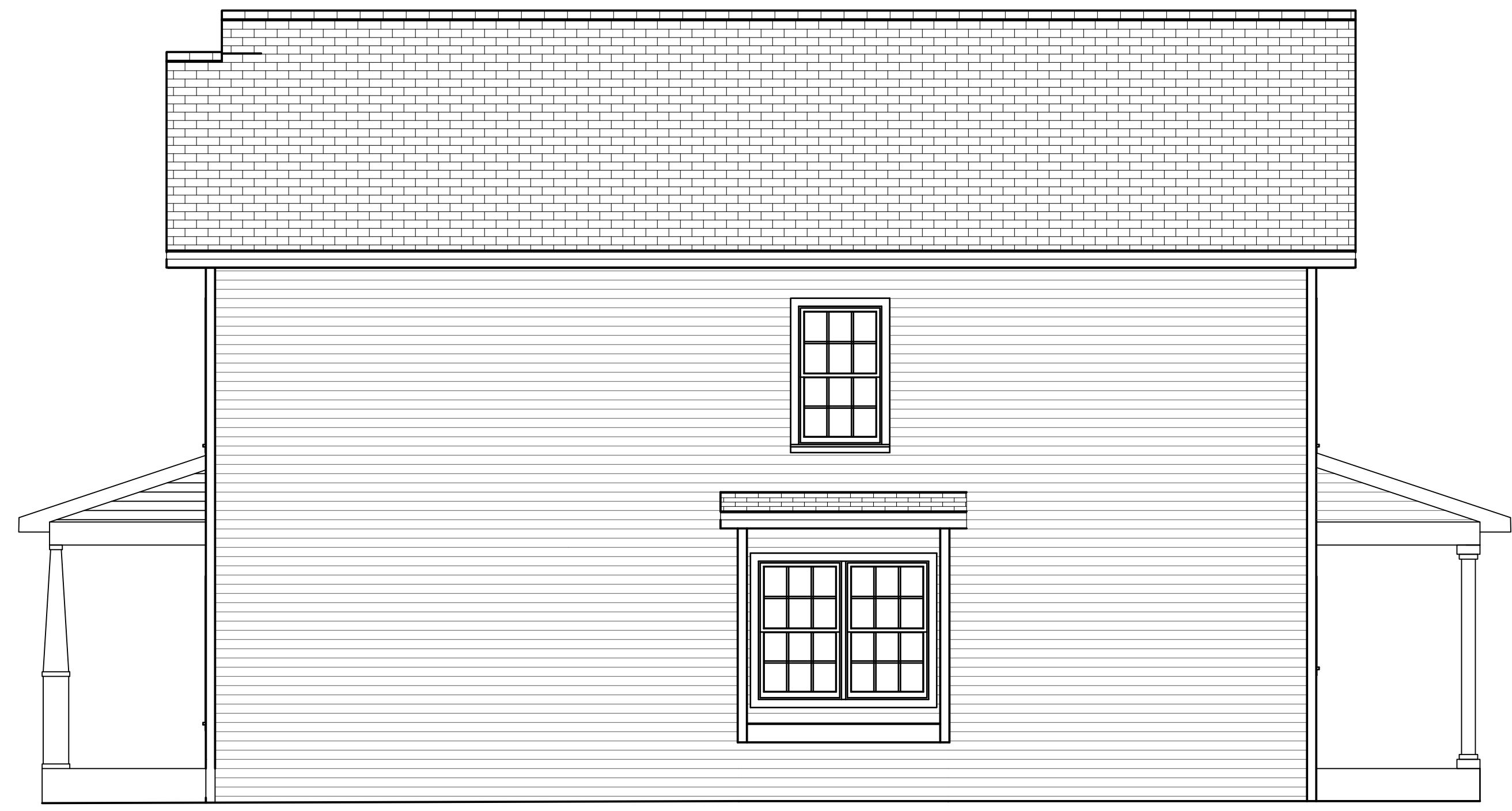
07/19/2022

SCALE:

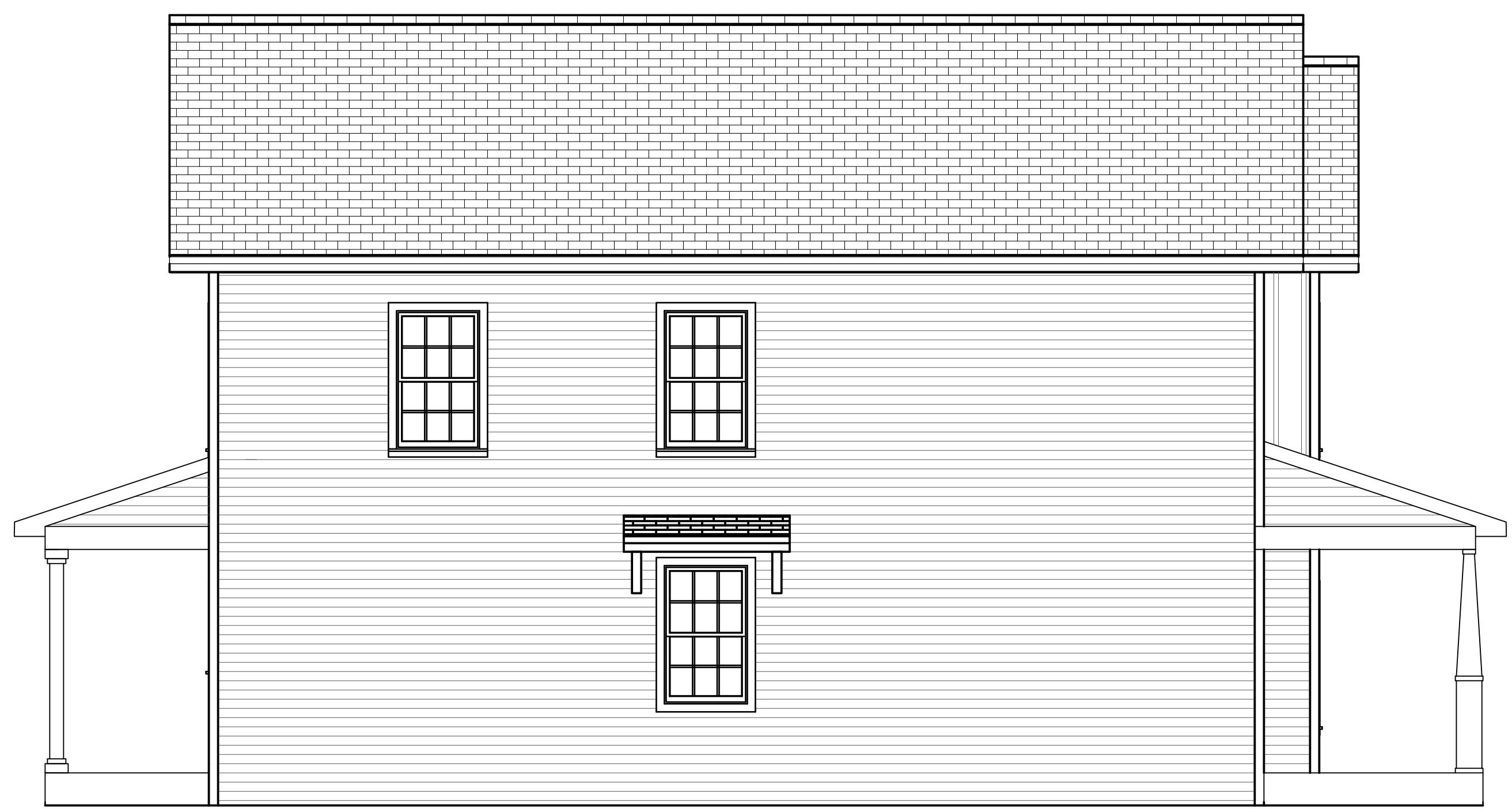
1/4"=1'-0"

SHEET:

A-4



LEFT ELEVATION



RIGHT ELEVATION

Revision Table		
Number	Date	Description

INHP
 18 S. EUCLID AVE.
 INDIANAPOLIS, IN 46201

WHITE OAK CONSTRUCTION
 Drawn By: R. McCowan
 10467 US Hwy 136 Indianapolis IN, 46077
 (317) 243-7140

DATE:

07/19/2022

SCALE:

1/4"=1'-0"

SHEET:

A-5