



ALTERNATE 'A' - 2ND FLOOR DIMENSIONAL PLAN



PLAN NORTH
SEE SITE PLAN

GENERAL NOTES:

G1. COORDINATE ALL PAINT & MATERIAL COLORS WITH OWNER PRIOR TO INSTALLATION AND/OR APPLICATION

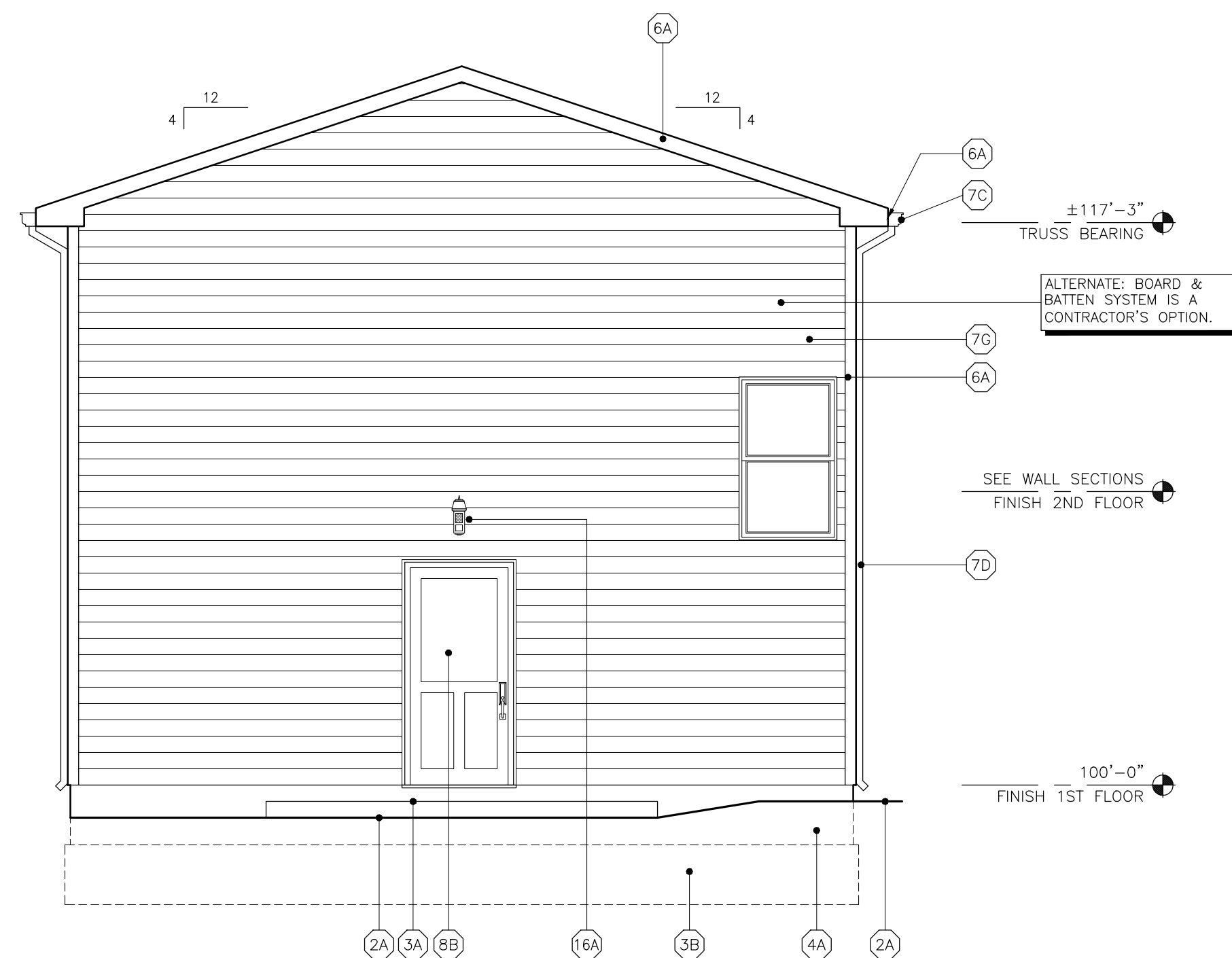
G2. INSTALL ALL VINYL SIDING ACCESSORIES AS REQUIRED INCLUDING LIGHT BLOCKS, VENTS, J CHANNELS, STARTER STRIPS, ETC.

G3. ELEVATIONS SHOWN ARE TYPICAL AND REPRESENT THE GENERAL SCOPE FOR THE BUILDING

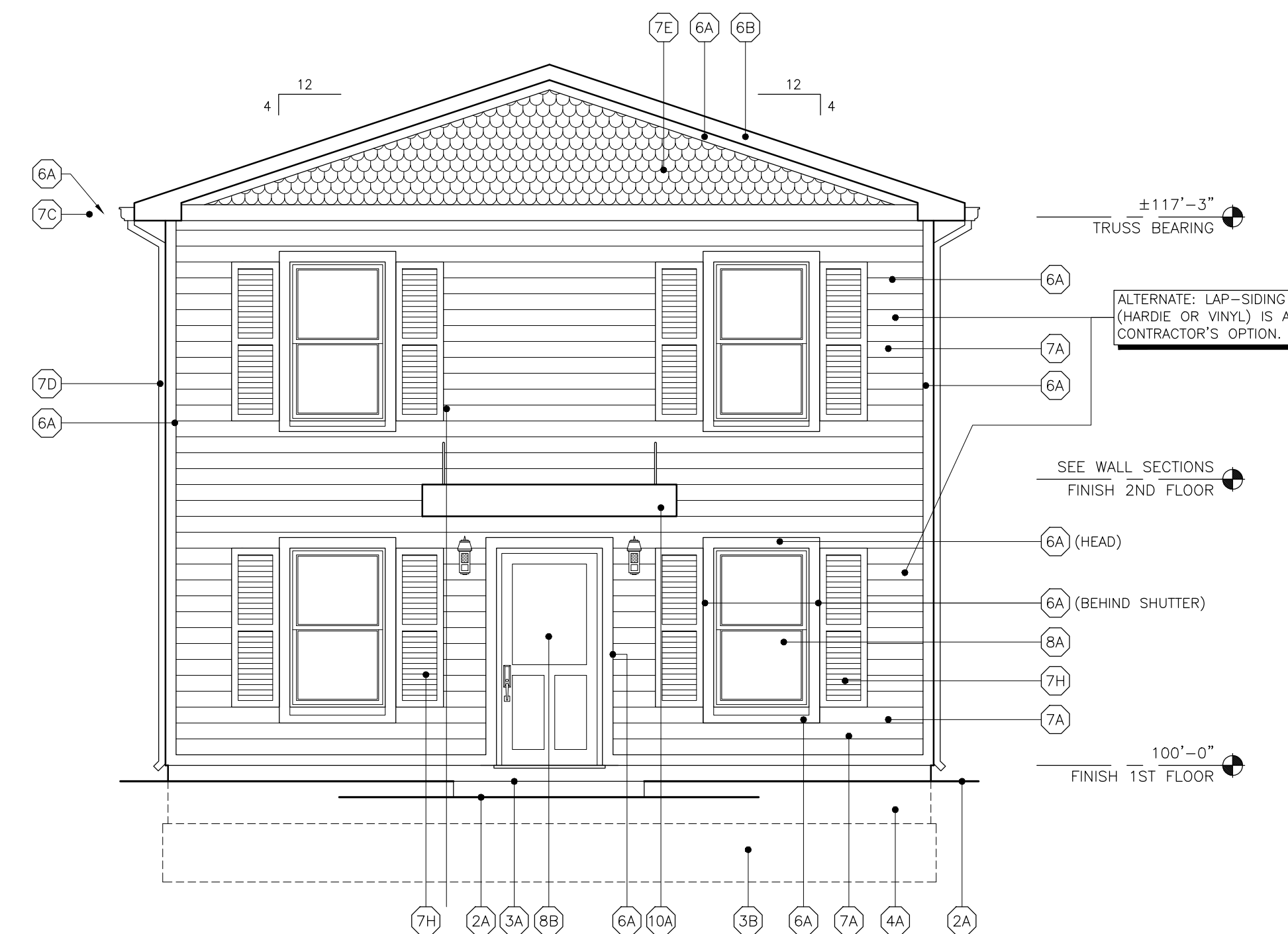
G4. ALL FINISH MATERIALS MUST COMPLY WITH THE REQUIREMENTS OF THE INTERNATIONAL BUILDING CODE AS ADOPTED BY THE STATE OF INDIANA.

KEY NOTES:

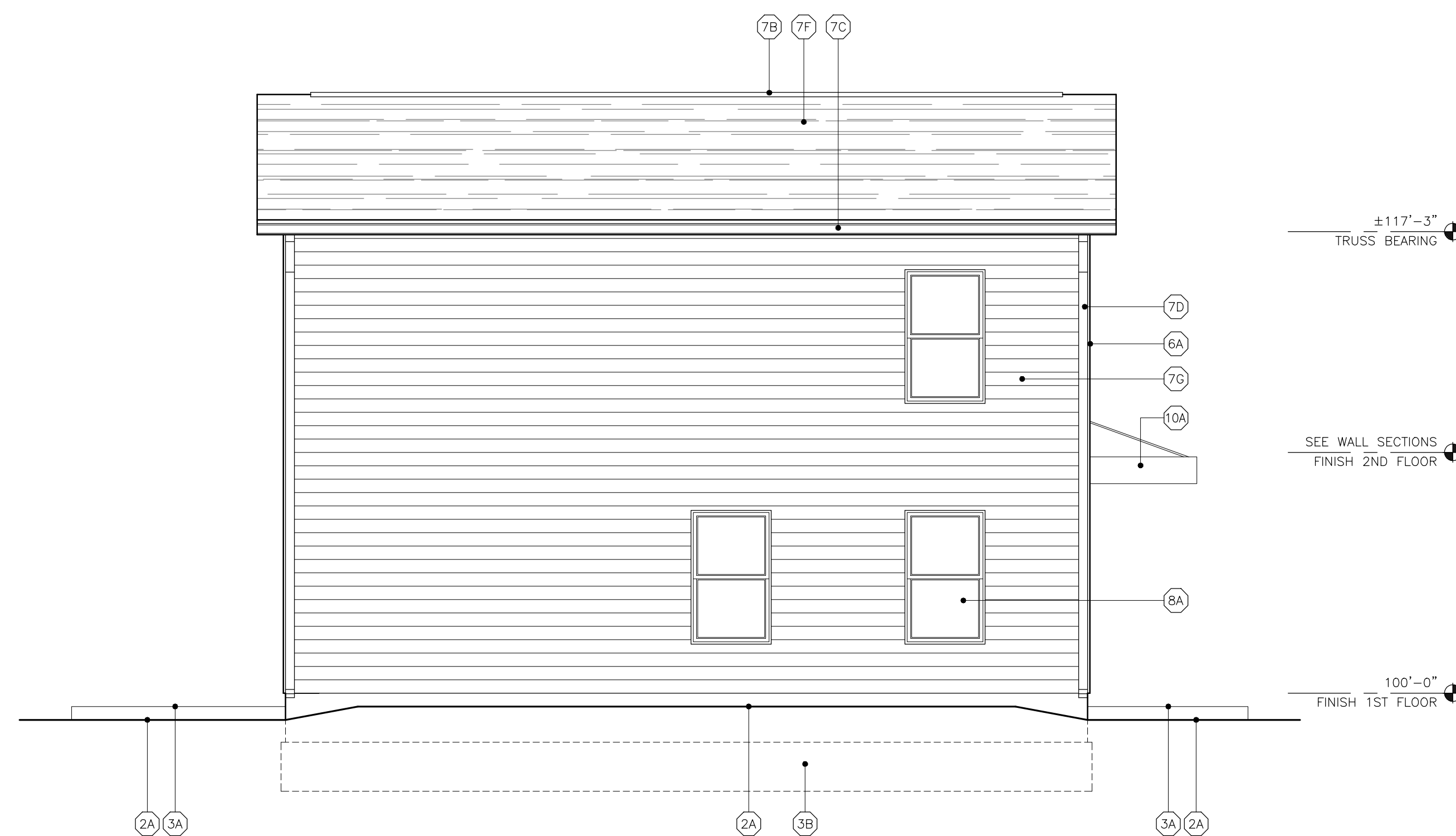
- | | |
|-----|---|
| 2A | FINISH GRADE. SEE SITE PLANS |
| 3A | CONCRETE PORCH OR PATIO WITH TURNED-DOWN SLAB TO 34" BELOW GRADE |
| 3B | CONCRETE GRADE-BEAM FOUNDATION. SEE WALL SECTION ON SHEET 22 & SLAB/FOUNDATION PLAN ON SHEET 42 |
| 4A | 6" CMU FOUNDATION. SEE WALL SECTIONS ON SHEET 42 |
| 6A | 1x4 PAINTED TRIM BOARD, TYPICAL |
| 6B | 1x6 PAINTED TRIM BOARD, TYPICAL |
| 7A | SIDING SYSTEM. SEE WALL SECTIONS |
| 7B | SEMI-CONCEALED ATTIC RIDGE VENT, INSTALLED PER MANUFACTURER'S SPECIFICATIONS |
| 7C | STD. SINGLE PLYCE EXTRUDED ALUMINUM GUTTER |
| 7D | STD. DOWNSPOUT W/ SPLASH BLOCK |
| 7E | SCALLOP SIDING SYSTEM |
| 7F | 25 YR. (MIN.) COMPOSITION ROOF SHINGLES OVER 15# FELT ROOFING PAPER |
| 7G | VINYL HORIZONTAL SIDING W/ 6" EXPOSURE |
| 7H | DECORATIVE WINDOW SHUTTER |
| 8A | WINDOW. SEE PLANS |
| 8B | DOOR. SEE PLANS |
| 10A | 8'-0" W x 1'-0" H x 4'-0" D CABLE-SUPPORTED ALUMINUM CANOPY |
| 16A | LIGHT FIXTURE TO BE SELECTED |



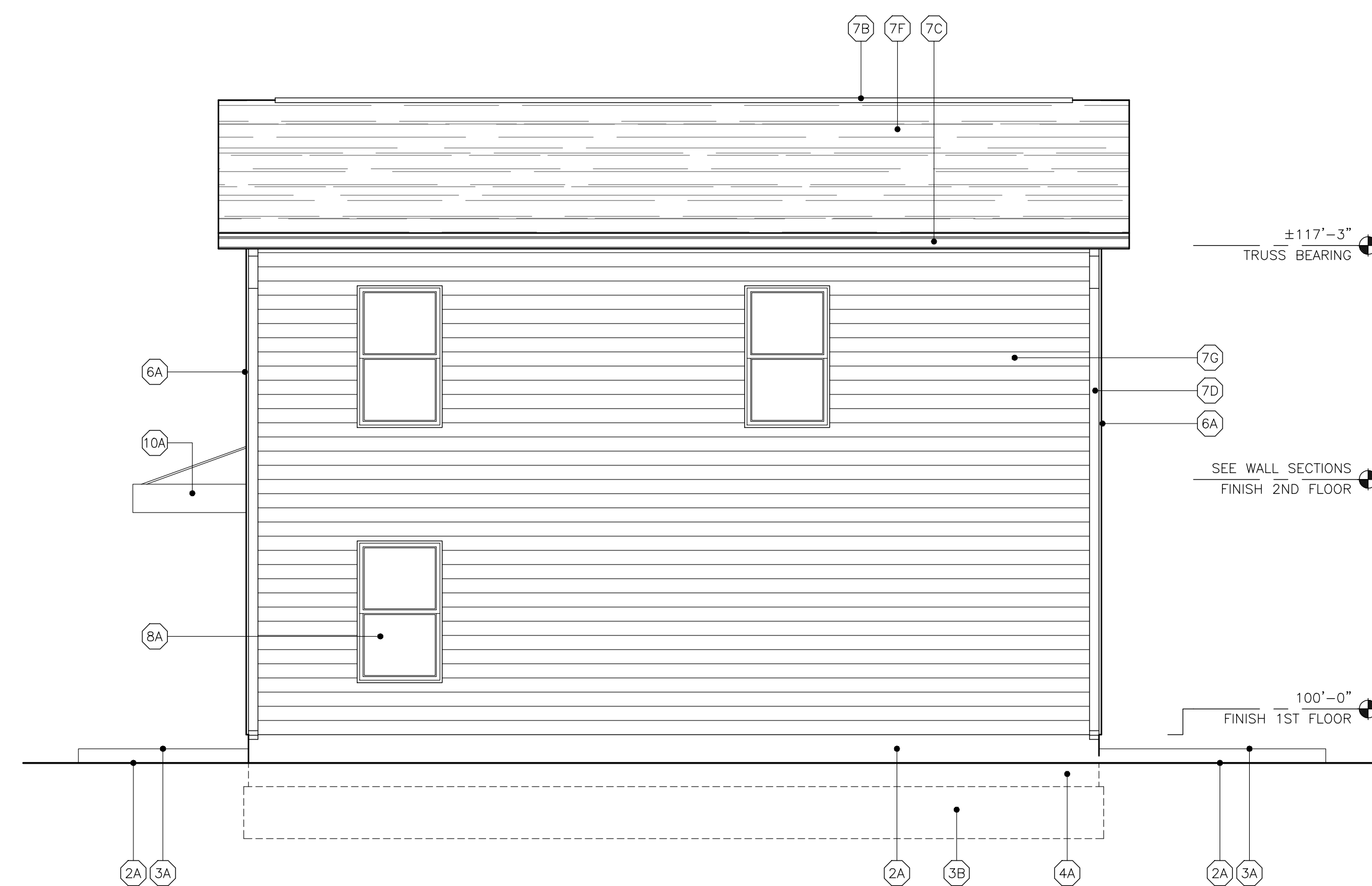
REAR ELEVATION
(PLAN NORTH) SCALE: 1/4"=1'-0"



FRONT ELEVATION
(PLAN SOUTH) SCALE: 1/4"=1'-0"



LEFT SIDE ELEVATION
(PLAN WEST) SCALE: 1/4"=1'-0"



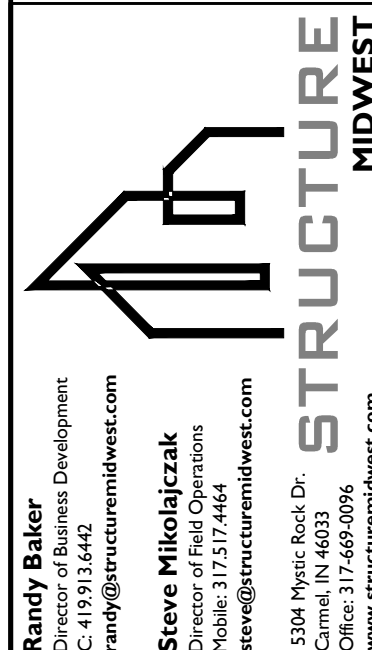
RIGHT SIDE ELEVATION

HOUSE PLANS FOR:

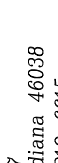
"THE NOOK"

INDIANA

ANYTOWN



**ISSUED FOR
PERMIT &
CONSTRUCTION**



Michael E. Balay
 PO Box 647
 Fishers, Indiana 46038
 Tel: (317) 219-6015
mike@balayarchitects.com

[illegible]

© 2021 BALAY ARCHITECTS, INC.

EXTERIOR BUILDING
ELEVATIONS

A3



GENERAL NOTES:

- G1. COORDINATE ALL PAINT & MATERIAL COLORS WITH OWNER PRIOR TO INSTALLATION AND/OR APPLICATION
- G2. INSTALL ALL VINYL SIDING ACCESSORIES AS REQUIRED INCLUDING LIGHT BLOCKS, VENTS, J CHANNELS, STARTER STRIPS, ETC.
- G3. ELEVATIONS SHOWN ARE TYPICAL AND REPRESENT THE GENERAL SCOPE FOR THE BUILDING
- G4. ALL FINISH MATERIALS MUST COMPLY WITH THE REQUIREMENTS OF THE INTERNATIONAL BUILDING CODE AS ADOPTED BY THE STATE OF INDIANA

KEY NOTES:

- (2A) FINISH GRADE. SEE SITE PLANS
- (3A) CONCRETE PORCH OR PATIO WITH TURNED-DOWN SLAB TO 34" BELOW GRADE
- (3B) CONCRETE GRADE-BEAM FOUNDATION. SEE WALL SECTIONS ON SHEET A2 & SLAB/FOUNDATION PLAN ON SHEET A2
- (4A) 8" CMU FOUNDATION WALL. SEE WALL SECTIONS ON SHEET A2
- (6A) 1x4 PAINTED TRIM BOARD, TYPICAL
- (6B) 1x6 PAINTED TRIM BOARD, TYPICAL
- (7A) SIDING SYSTEM. SEE WALL SECTIONS
- (7B) SEMI-CONCEALED ATTIC RIDGE VENT, INSTALLED PER MANUFACTURER'S SPECIFICATIONS
- (7C) STD. SINGLE PIECE EXTRUDED ALUMINUM GUTTER
- (7D) STD. DOWNSPOUT W/ SPLASH BLOCK
- (7E) SCALLOP SIDING SYSTEM
- (7F) 25 YR. (MIN.) COMPOSITION ROOF SHINGLES OVER 15# FELT ROOFING PAPER
- (7G) VINYL HORIZONTAL SIDING W/ 6" EXPOSURE
- (7H) DECORATIVE WINDOW SHUTTER
- (8A) WINDOW. SEE PLANS
- (8B) DOOR. SEE PLANS
- (10A) 8'-0" W x 1'-0" H x 4'-0 D CABLE-SUPPORTED ALUMINUM CANOPY
- (16A) LIGHT FIXTURE TO BE SELECTED

INDIANAPOLIS, INDIANA

St i l l w a t e r M i n e s o l o

Michael E. Balay
Principal Architect
Phone: 317.746.4638
Tel: (317) 219-6615
mike@balayarchitects.com

B A L A Y
ARCHITECTS

PROJECT NO.: 2117
DRAWN BY: MB
DATE: 05/05/2021
CHECKED BY: MB
INIT: MB
ISSUED FOR PERMIT & CONSTRUCTION

REV. DATA

© 2021 BALAY ARCHITECTS, INC.

ALTERNATE EXTERIOR BUILDING ELEVATIONS

A4

HOUSE PLANS FOR:

"THE NOOK"

ANYTOWN

INDIANA

Randy Baker
Director of Business Development
randy@structuremidwest.com

Steve Mikolajczak
Principal Architect
Phone: 317.517.7464
steve@structuremidwest.com

15304 Mystic Rock Dr
Carmel, IN 46033
Office: 317.469.0099
www.structuremidwest.com

STRUCTURE
MIDWEST

ISSUED FOR PERMIT & CONSTRUCTION